

# McMenamins - Anderson School

## Design Packet

MCMENAMINS / ANKROM MOISAN  
12.06.2013



Ankrom Moisan Architects, Inc.  
ARCHITECTURE INTERIORS URBAN DESIGN BRANDING  
ankrommoisan.com

6720 SW Macadam Ave / Suite 100  
Portland, OR 97219  
503.245.7100

117 S Main St / Suite 400  
Seattle, WA 98104  
206.576.1600



## Table of Contents

- 3** Overall Site Plan
- 4, 5** Main Hotel
- 6, 7** Conference Center
- 8, 9** Games/Pub Brewery
- 10,11** Cafeteria/Restaurant
- 12,13** Pool/Tiki Bar & Spa
- 14,15** Shack Bar

## Project Team

### Architect

Ankrom Moisan Architects, Inc.

### Engineer

Froelich Consulting Engineers, Inc.

### Contractor

Pacific Crest Construction, Inc.

### Contractor

Anderson Construction Company

### Civil

David Evans and Associates

### Landscape Architect

MainLine Design







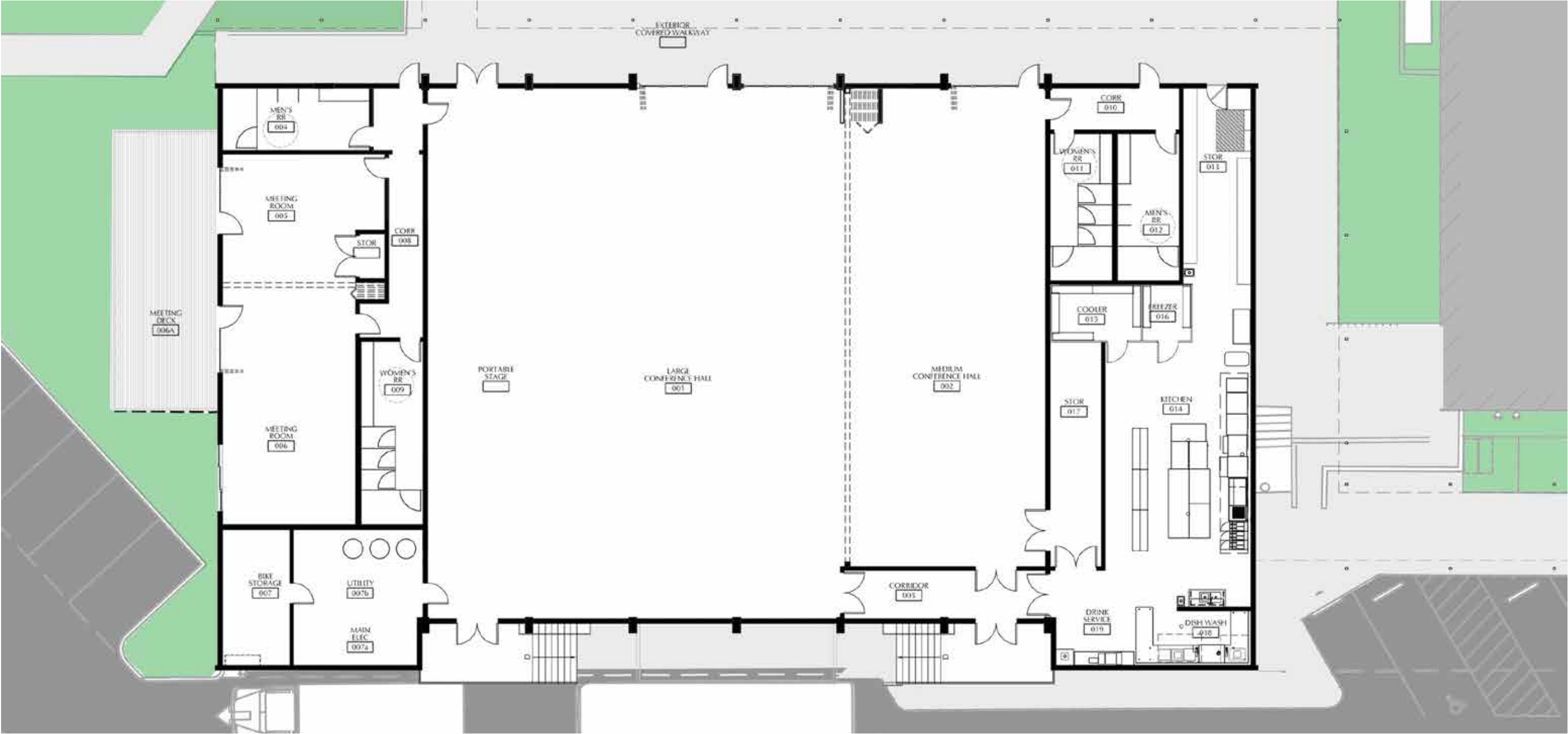


Hotel - Building A

33,973 SF



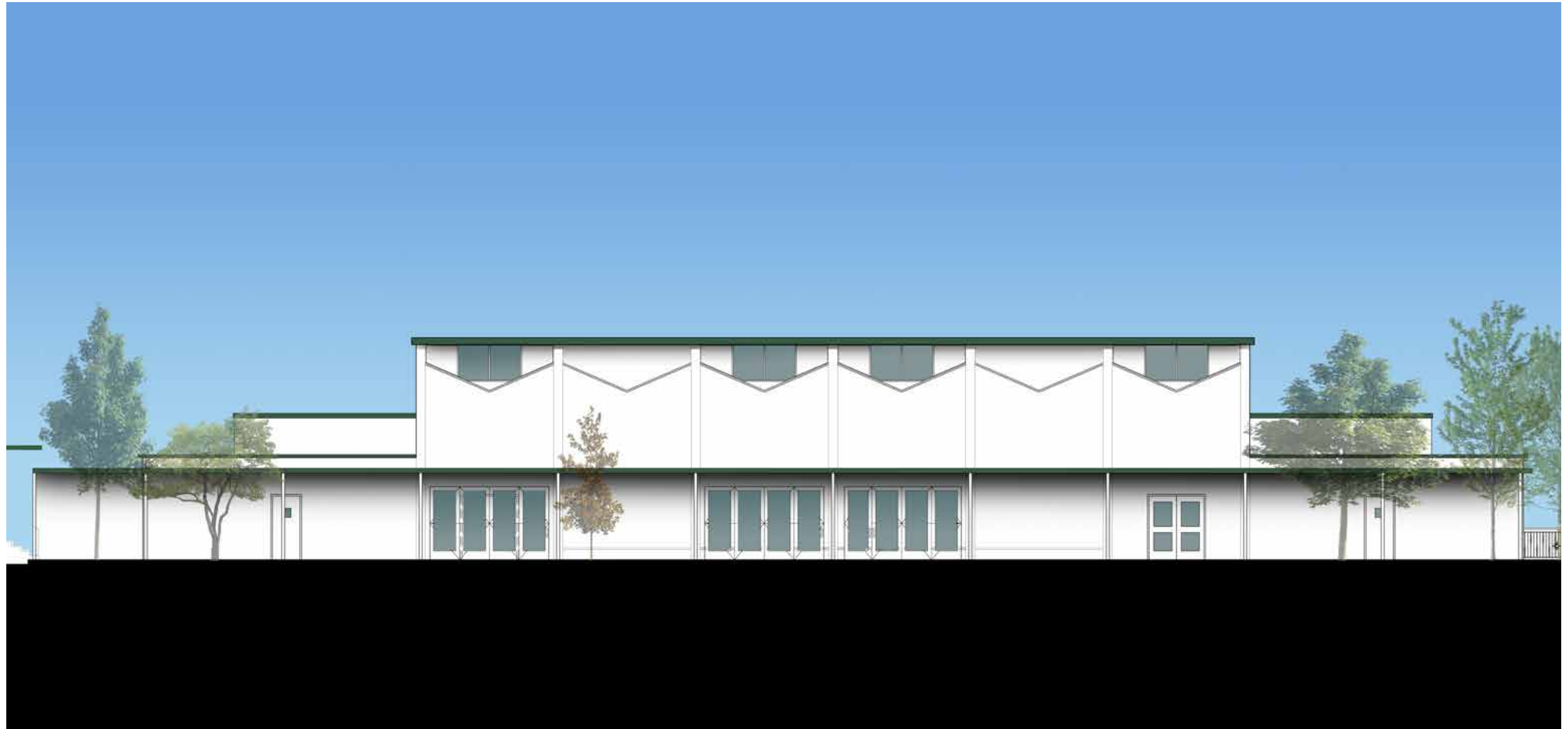
Hotel Building - Facade on Bothell Way



Conference Center - Building B

12,086 SF



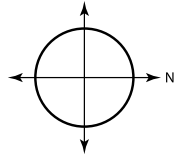


Conference Center - North Facade

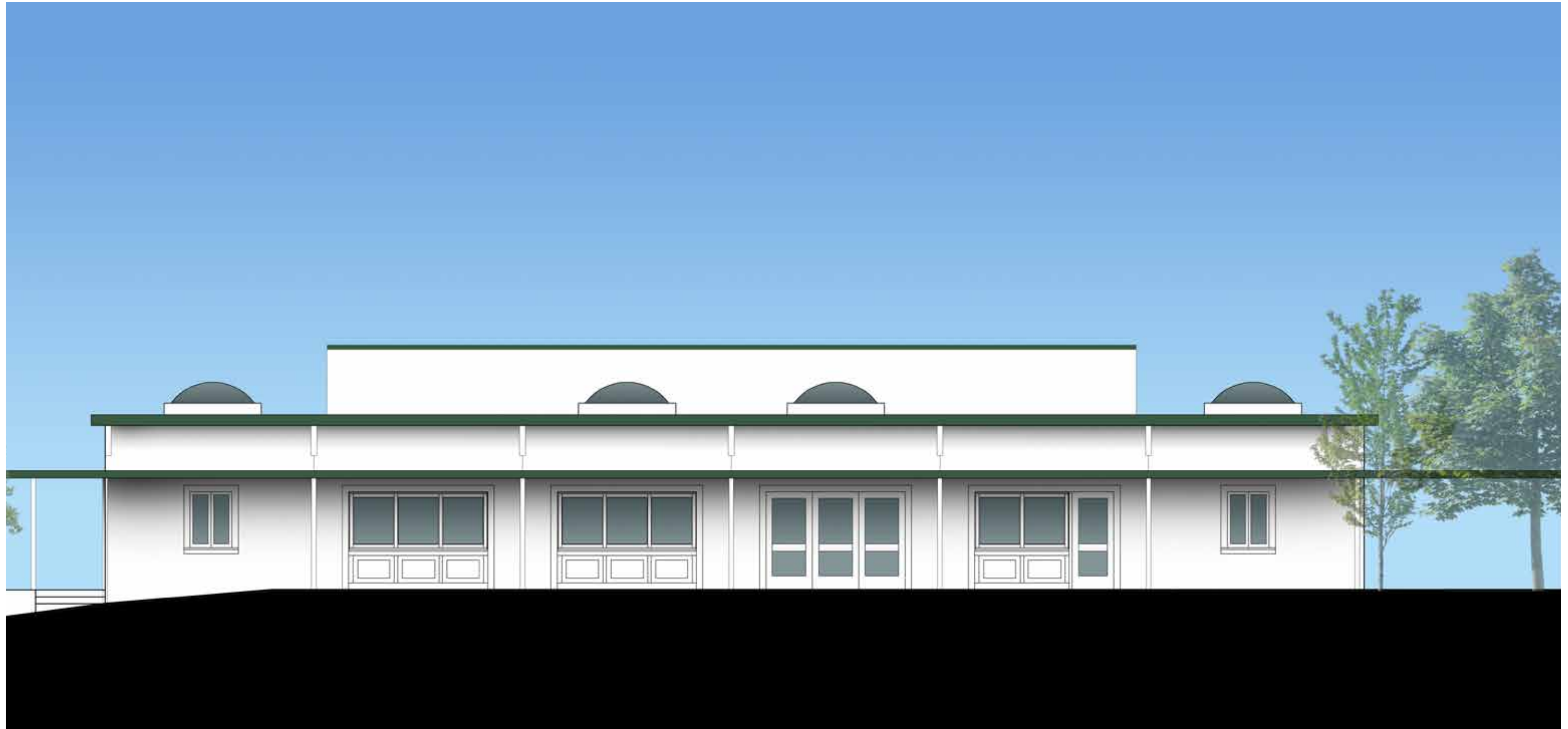


Games Pub/Brewery - - Building C

6,294 SF





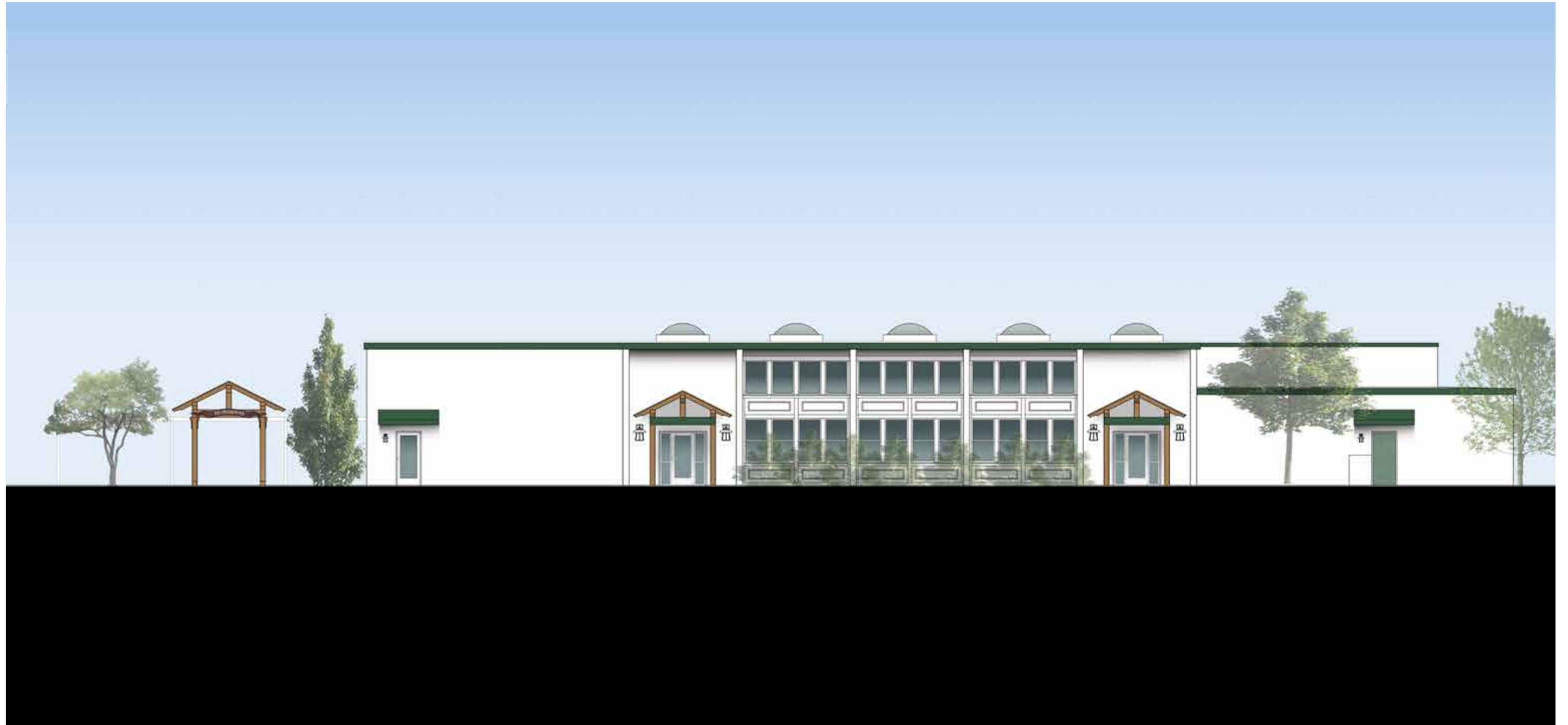


Games Pub/Brewery - East Facade



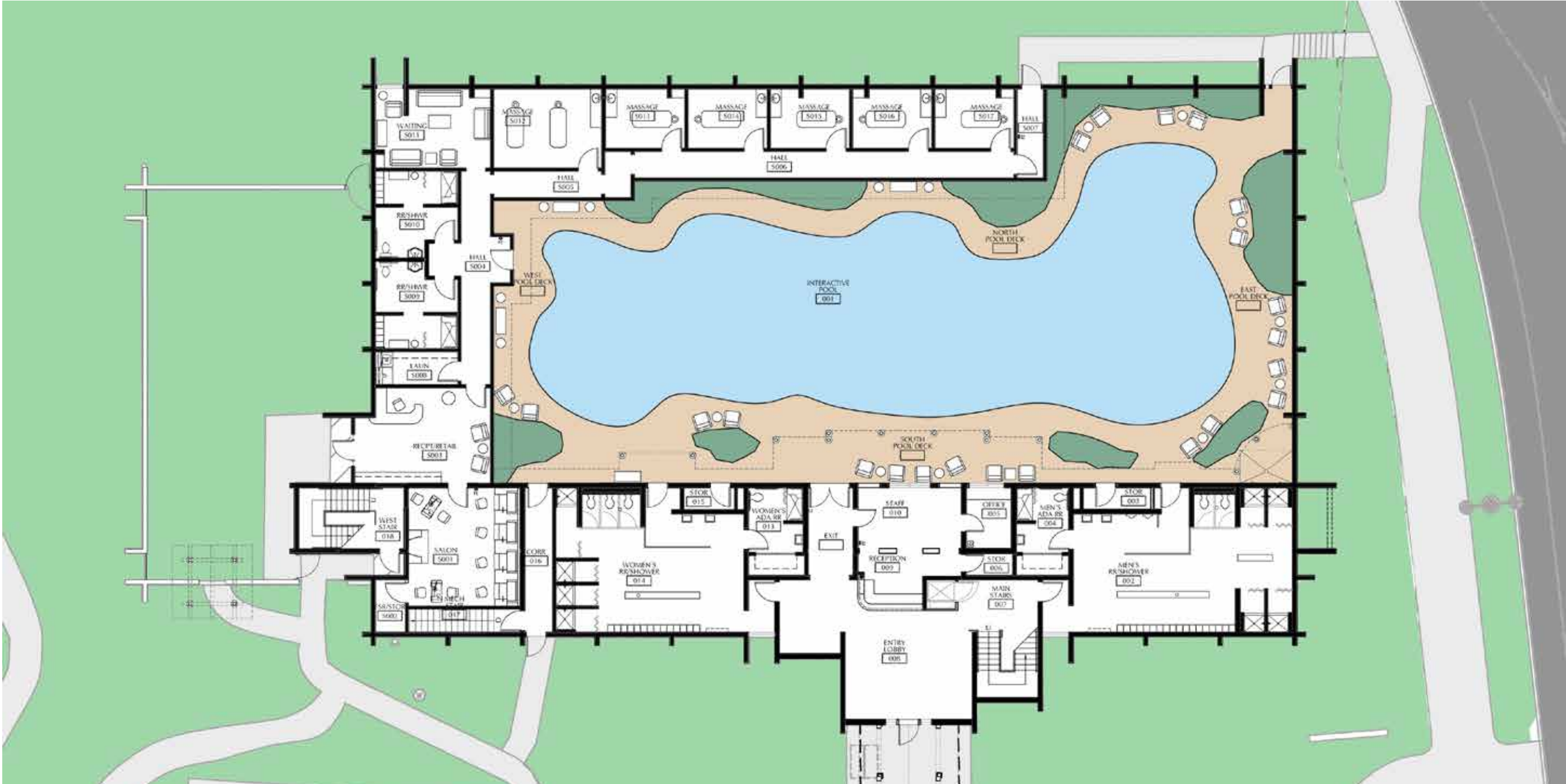
Cafeteria/Restaurant - - Building D

8,667 SF



Cafeteria/Restaurant - North Facade



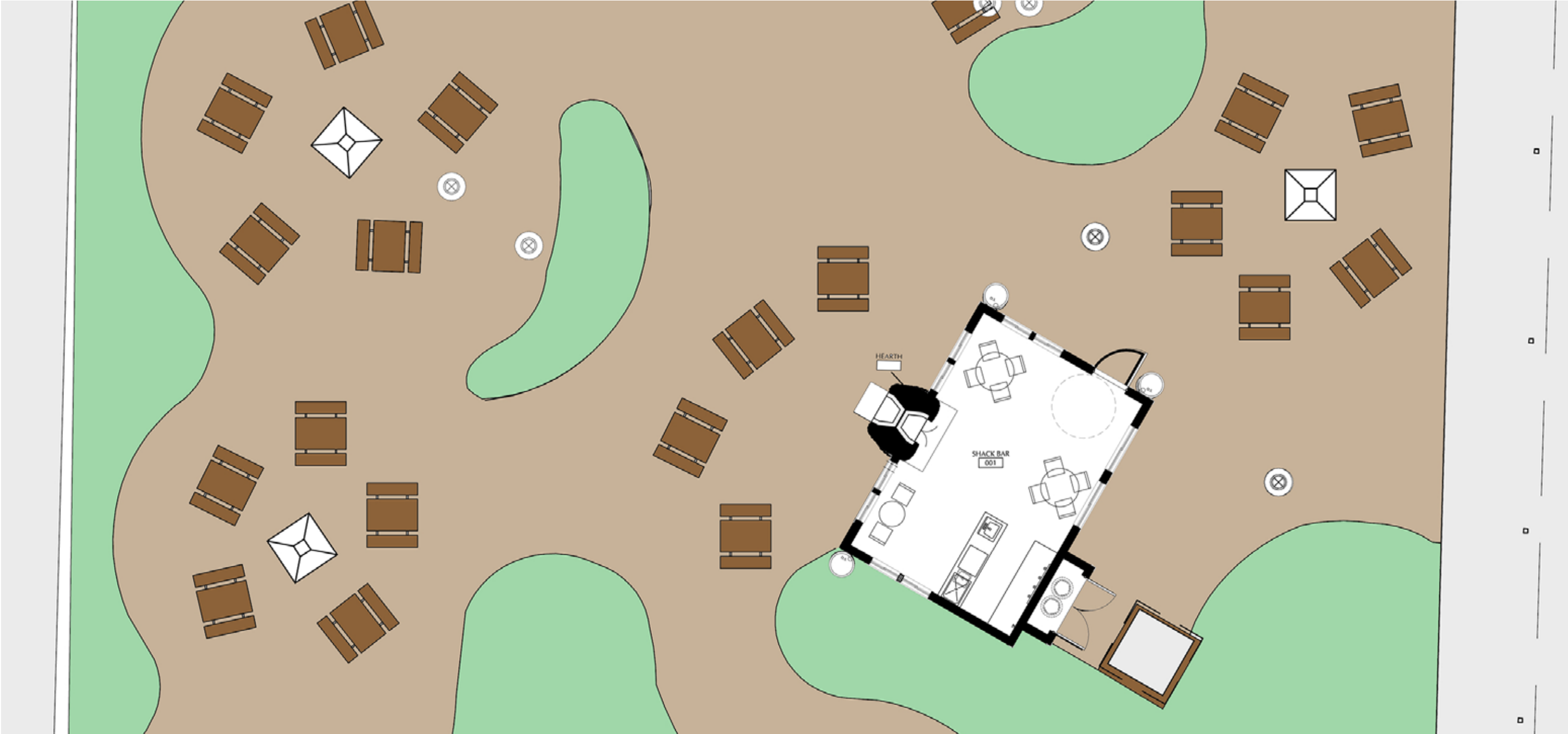


Pool/Tiki Bar & Spa - - Building E

16,074 SF



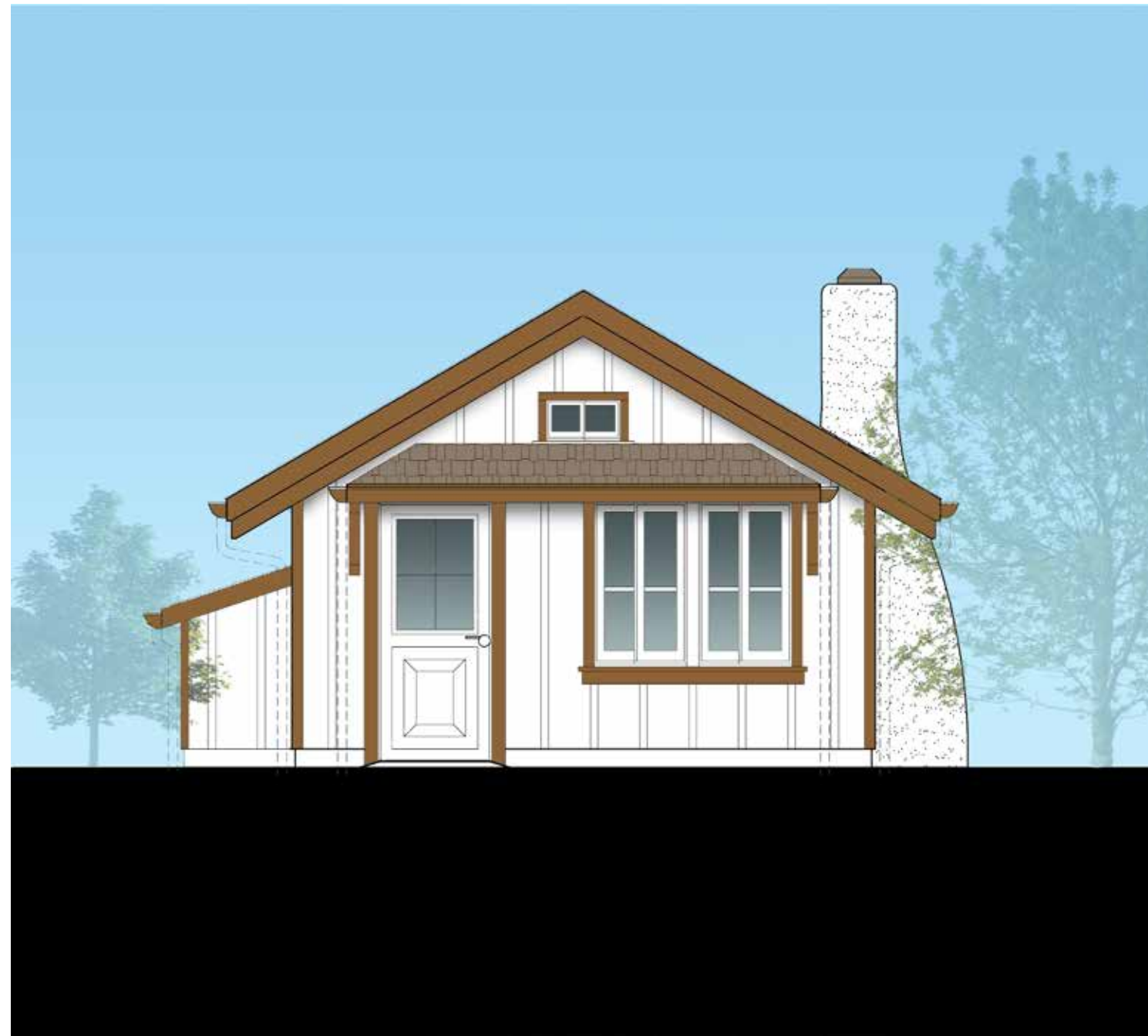
Pool/Tiki Bar & Spa - South Facade



Shack Bar - - Building F

363 SF





Shack Bar - West Facade